

2023 Big Game Regulations & Tag Numbers

September 16, 2022



Brian Wolfer, Game Program Manager
Dr. Don Whittaker, Ungulate Coordinator
Derek Broman, Carnivore/Furbearer Coordinator

Presentation Overview



- Process for big game regulation development
- Big Game Regulation Review Project update
- 2023 regulation proposals
 - General regulations
 - Species specific: season dates, tag numbers, etc.



Annual regulations set within an adaptive management framework

- Species management plans,
- Population surveys and trends,
- Wildlife health conditions including disease,
- Changing habitat conditions including impacts from wildfire and drought,
- Prior year harvest reporting, and
- Other data around survival and mortality, human-wildlife interactions, management concerns, and public input.



To protect and enhance Oregon's fish and wildlife and their habitats for use and enjoyment by present and future generations

Big Game Season Development



- Fall to Spring: Biological data collection
- March to June: Internal data analysis
- July: Public outreach
- September: Commission adoption
- October: Finalize edits to following year's regulations
- December: Begin selling licenses and tags

Climate & Weather Overview

- Long term impacts of climate affecting some populations
- Severe drought in 2021 followed by moderate winter
- Relatively wet spring, good spring/summer forage conditions in many areas
- Fires impacted some 2021 hunts
- Most big game seasons shift 6 days later in 2023



Big Game Regulation Review



- Department initiated project to review Big Game Regulations in 2017
- Multiple phases that started with “simplification”
- Currently in phase 3, review of hunting seasons
 - Spread over multiple years
 - This year focused on western Oregon late seasons
 - Controlled youth elk archery opportunity

2023 Proposals Overview

- General Regulations
- Species Specific
 - Bear/Cougar
 - Bighorn Sheep/Mountain Goat
 - Pronghorn
 - Elk
 - Deer





Wildlife Inspection Stations

Authorized by HB 3152
in 2021 Session

- Tool to monitor for
wildlife diseases

Inspection stations
operational for fall 2022

- Initial focus on CWD
- Locations on webpage



Wildlife Inspection Stations

- Only applies to vehicles transporting wildlife or wildlife parts
- Administrative inspection
- Signed as “CWD Check Station” or “Wildlife Inspection Station”

Cooperative Travel Management Areas (TMAs)

- Modify Rager TMA in Ochoco WMU to include archery and pronghorn hunts
- Modify Camp Creek in Northside WMU to include archery seasons
- Modify 14 NE Oregon TMAs

Controlled Hunt Deadlines

- Efficiencies created through ELS
- Staff proposing to maintain current controlled application deadlines
 - Proposing to modify application revision deadline (all species except spring bear) from June 1 to May 25
 - Draw results earlier; moved from June 20 to June 12

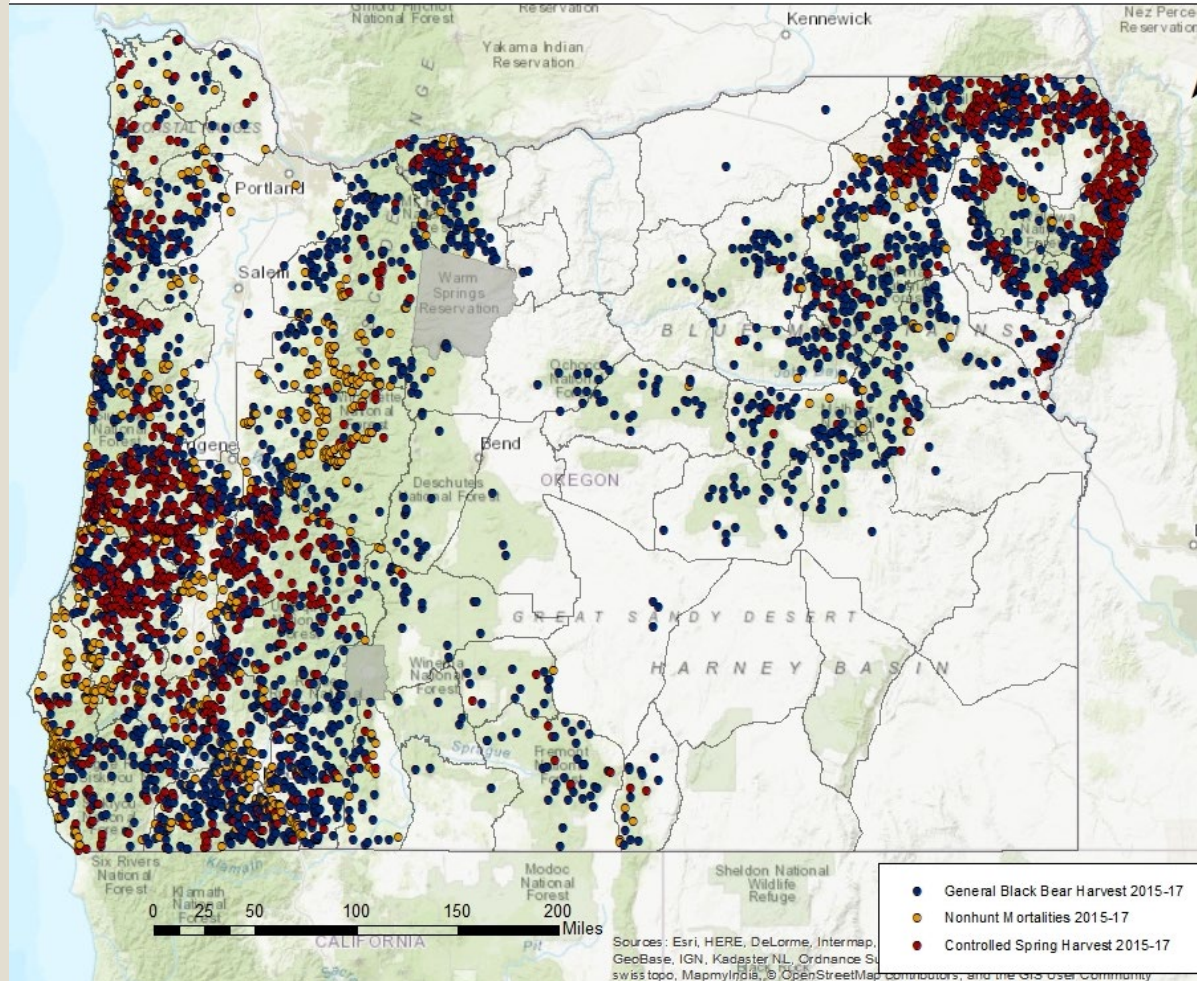


Bear and Cougar



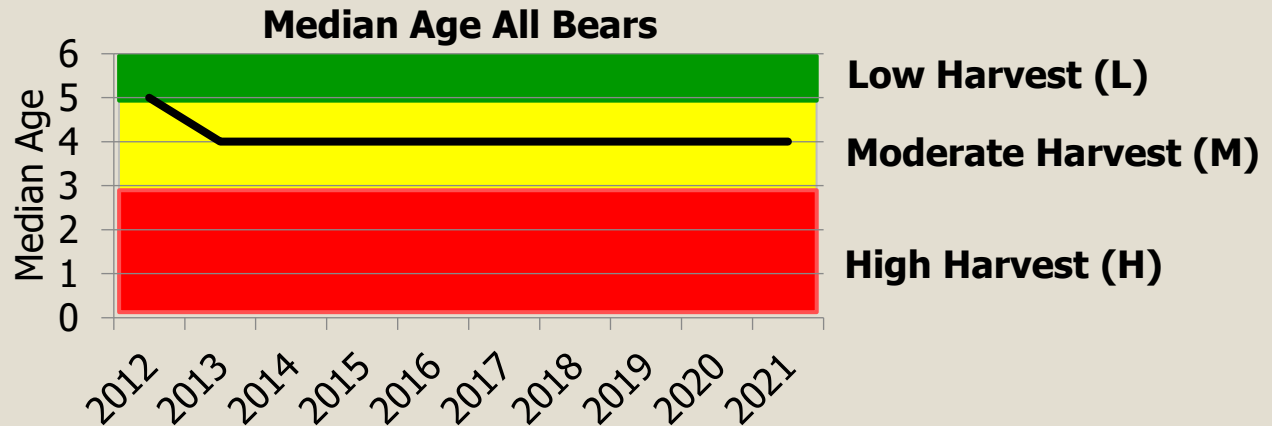
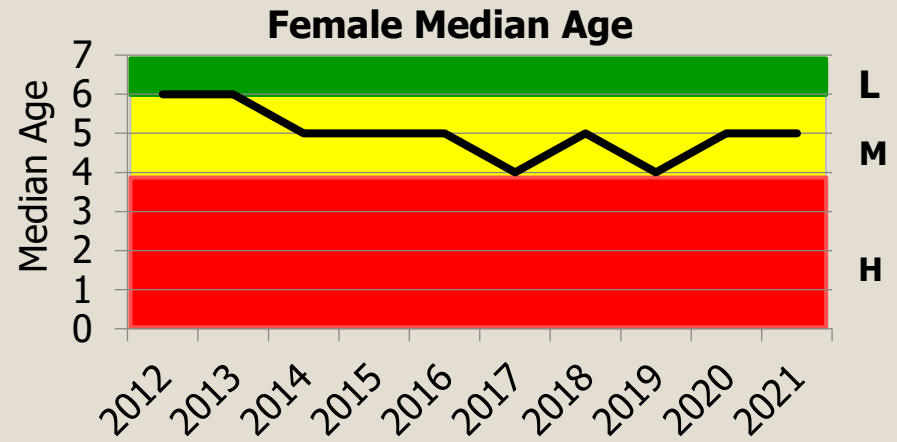
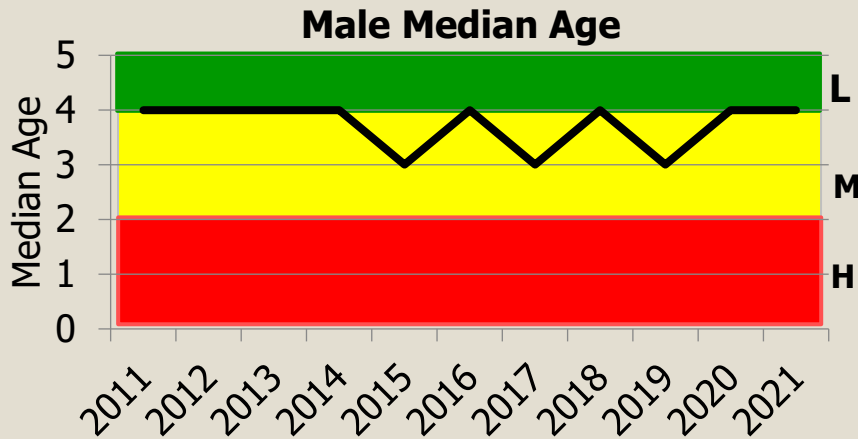
Bear Population Monitoring

- Black Bear Management Plan
- Check-in for all bear mortalities
- Harvest reporting
- Use of indices and (new) model



Bear Population Monitoring

- Harvest sustainable if median age of males ≥ 2 years, females ≥ 4 years, and all bears ≥ 3 years
- No indication of unsustainable harvest

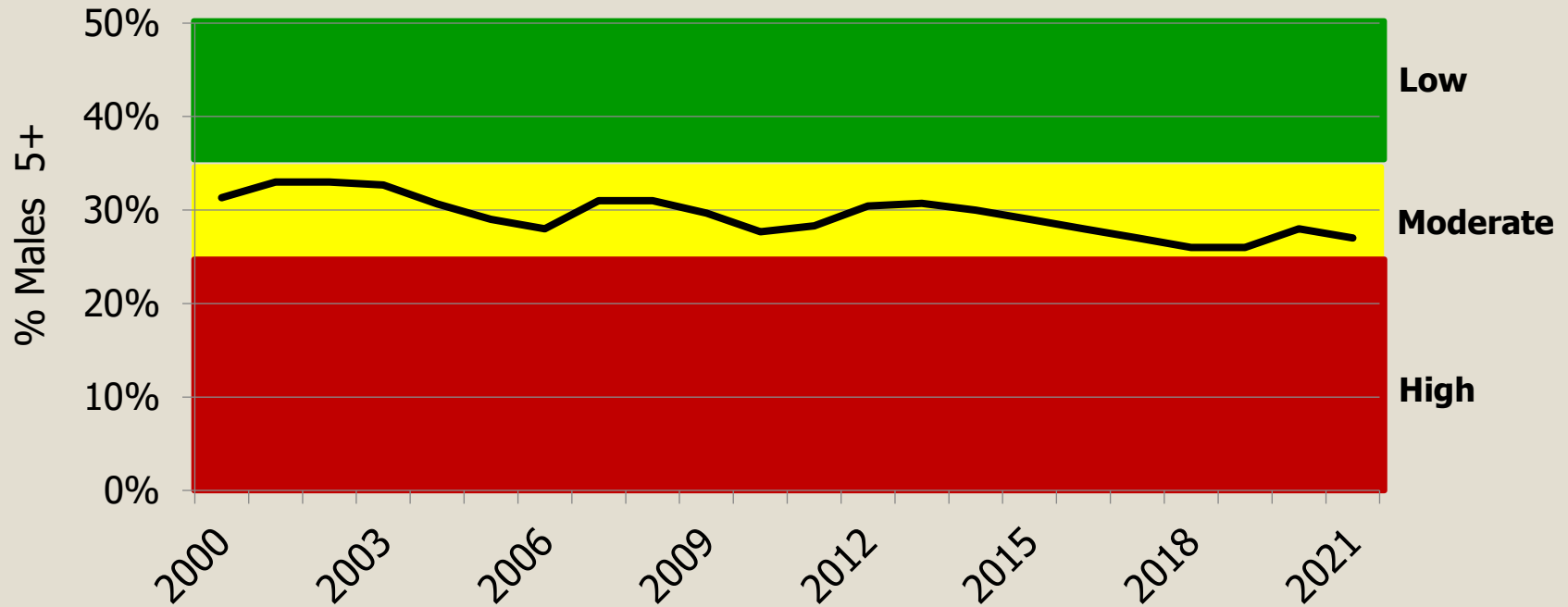


Bear Population Monitoring



Sex-age criteria to assess take level of black bears in Oregon.
Criteria based on 3-year running averages of all mortalities.

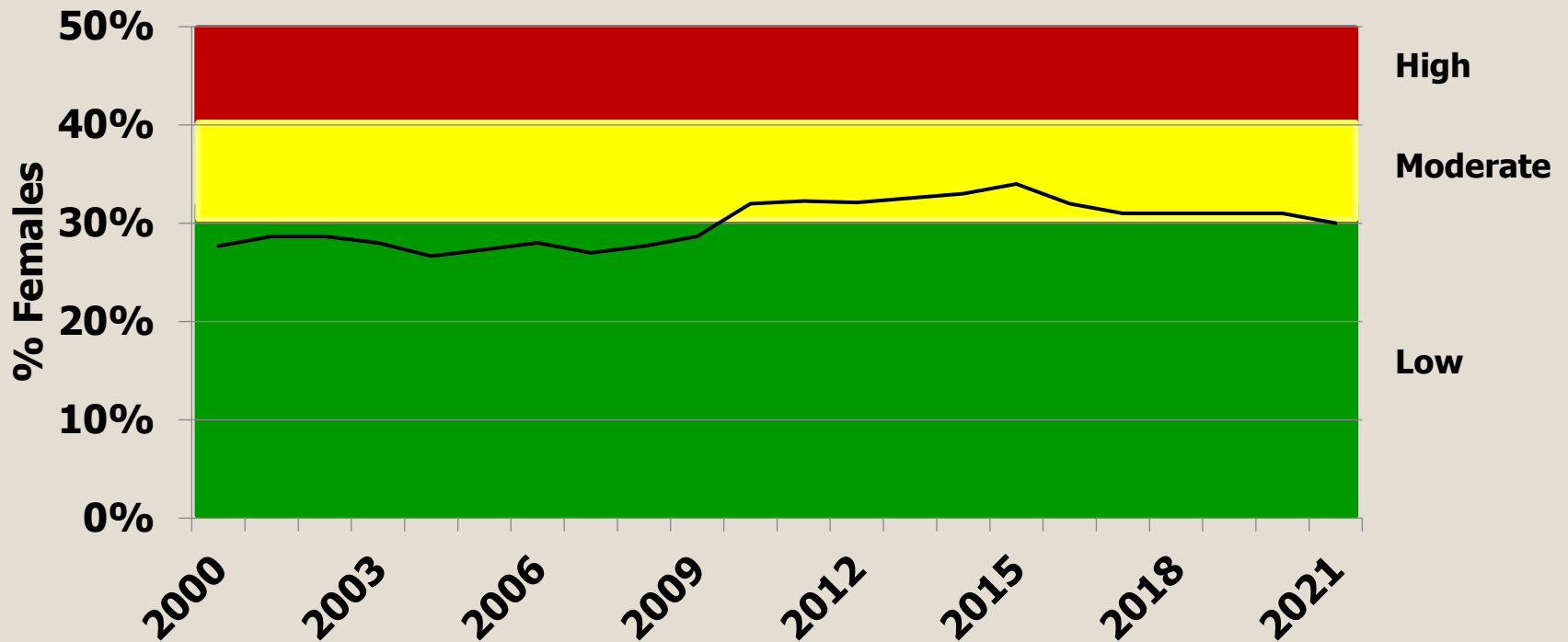
Criteria	Low	Moderate	High
% Males ≥ 5 yr old	>35%	25–35%	<25%



Bear Population Monitoring

Sex-age criteria to assess take level of black bears in Oregon.
Criteria based on 3-year running averages of all mortalities.

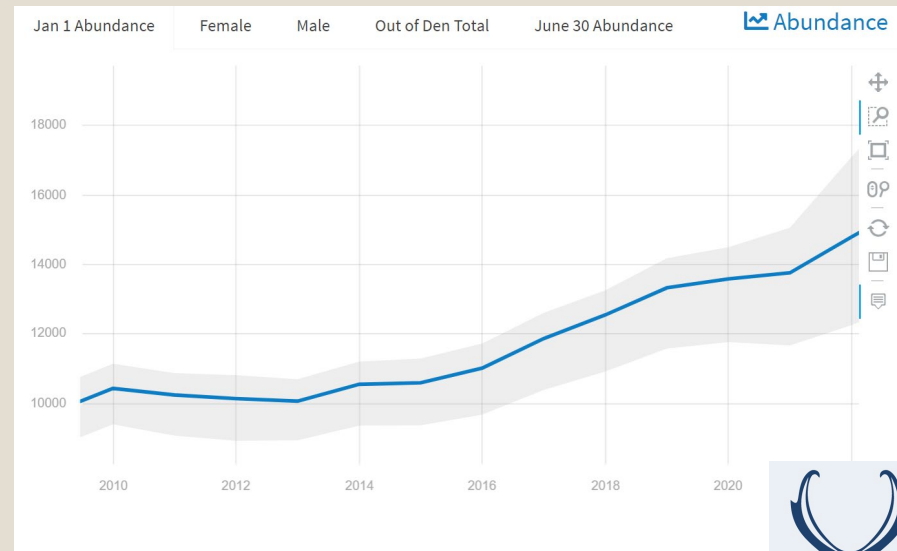
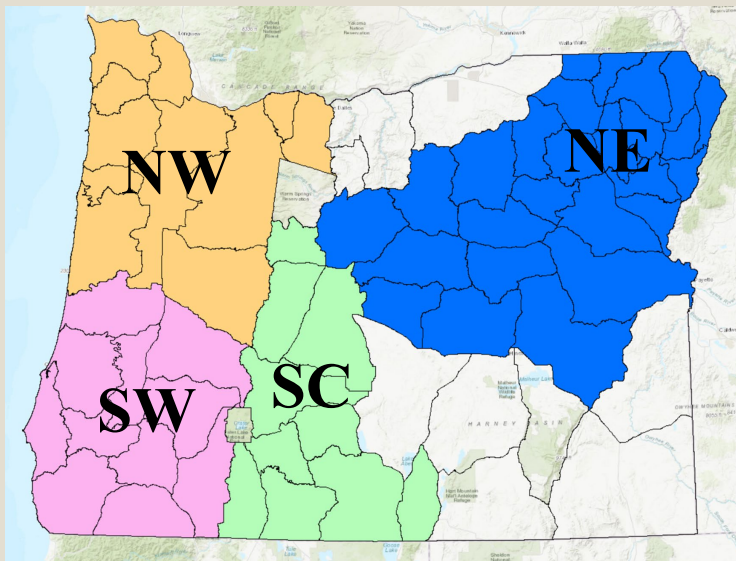
Criteria	Low	Moderate	High
% Females	<30%	30–40%	>40%



Bear Population Monitoring

Oregon Black Bear Integrated Population Model (IPM)

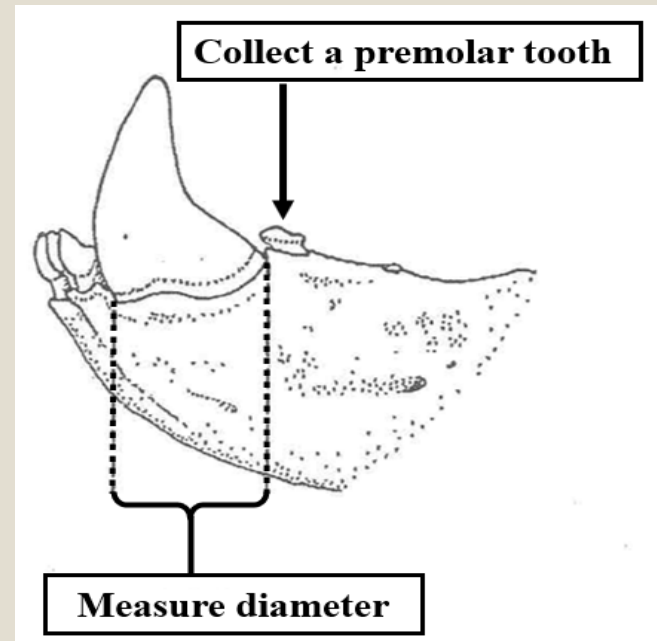
- IPM created by SpeedGoat
- Uses primary inputs of mortalities, harvest effort, and density estimates
- Model outputs for each zone (NW, SW, NE, SC)
- 2020 Statewide Estimate ~34,000 (29,000-39,000)



Spring Bear 2023 Season Proposals



- Maintain dates: April 1 to May 31 statewide
- 10,627 controlled hunt tags across 18 hunts
 - One proposed tag increase (741A White River-Hood)
 - Standard adjustments for unsold tags
- Continue to protect cubs and sows with cubs
- Continue mandatory check-in



General Bear 2023 Season Proposals



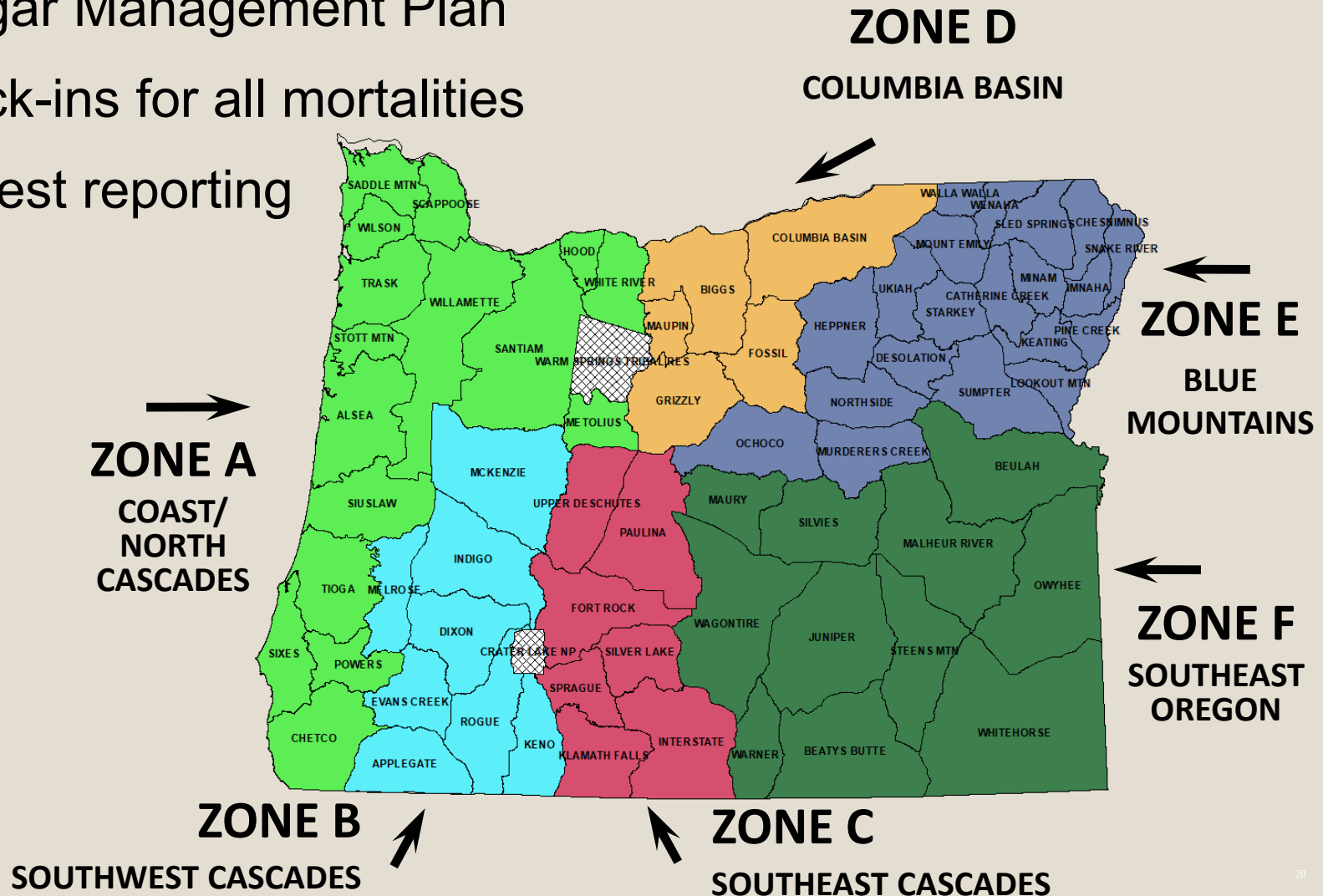
- Maintain dates: Aug 1 to Dec 31 statewide
- Maintain season structure
 - 2 bear tag opportunity, statewide additional tag
- Continue to protect cubs & sows with cubs
- Continue mandatory check-in

Year	Spring			Fall			Total		
	Harvest	Check- In	Rate	Harvest	Check- In	Rate	Harvest	Check- In	Rate
2016	580	549	95%	1,003	825	82%	1,583	1,374	87%
2017	607	545	90%	1,134	943	83%	1,741	1,488	85%
2018	627	594	95%	1,103	935	85%	1,730	1,529	88%
2019	724	674	93%	1,484	1,145	77%	2,208	1,819	82%
2020	925	748	81%	1,608	1,026	64%	2,503	1,774	71%
2021	743	614	83%	1,681	967	58%	2,424	1,581	65%

Cougar Monitoring and Zones



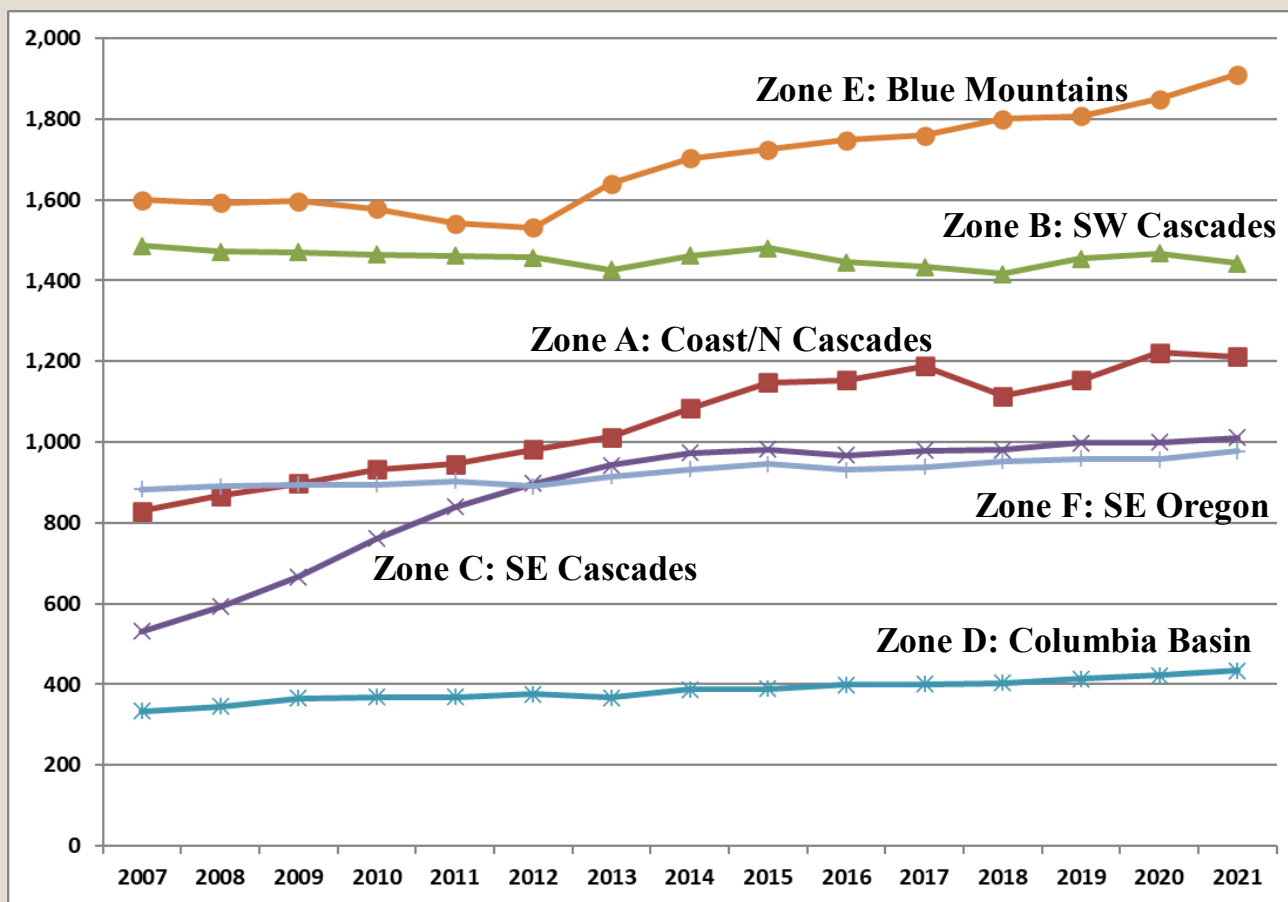
- Cougar Management Plan
- Check-ins for all mortalities
- Harvest reporting



Cougar Population Monitoring

Plan Objective 1: ODFW will manage for a stable cougar population that are to not to fall below 3,000 cougars statewide

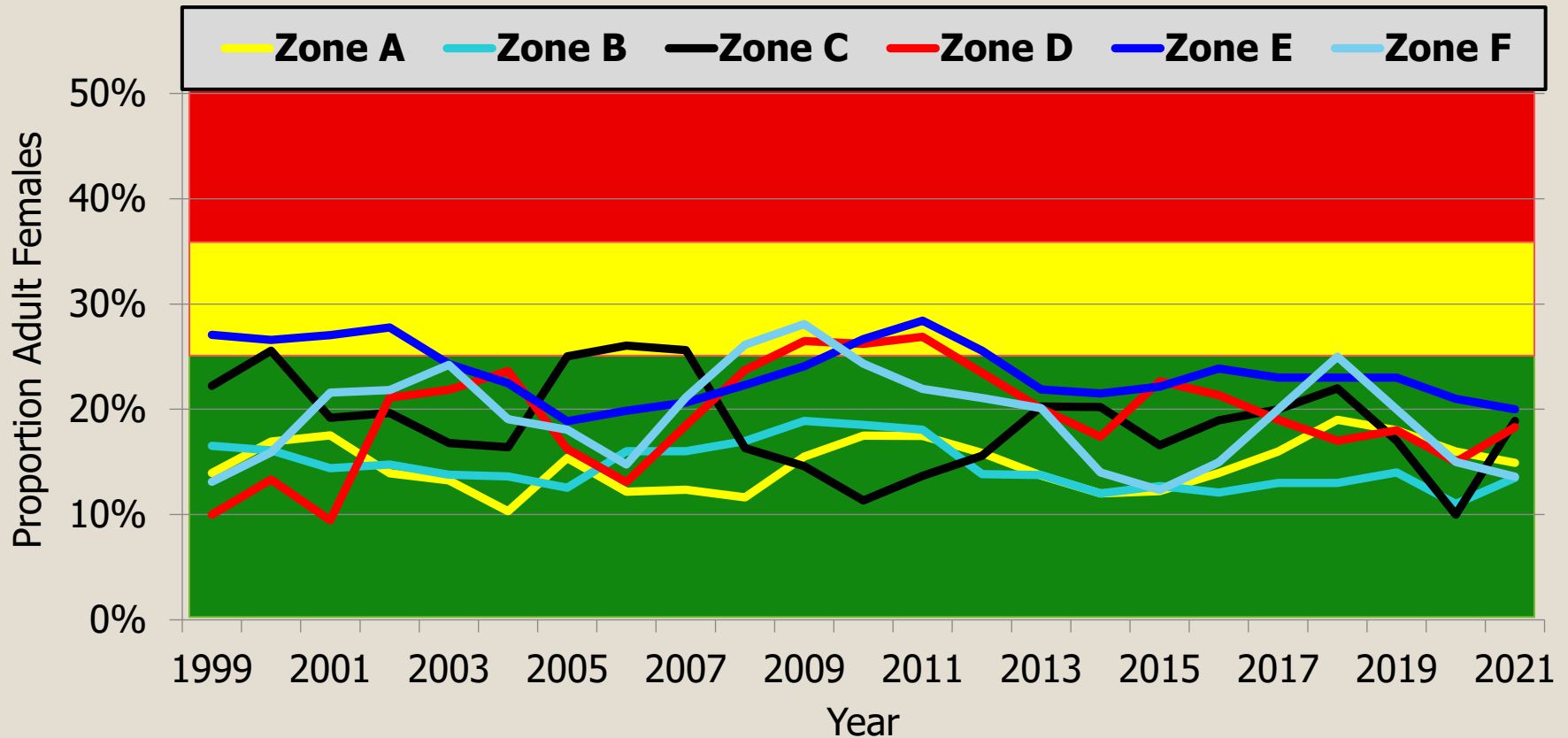
Statewide Population Estimate (all age classes) of 6,987 in 2021



Cougar Population Monitoring



- Three-year average proportion adult (3+ year old) females in the total mortality $\leq 25-35\%$
- No Cougar Zones exceed 35%



Cougar Population Monitoring



Zone quotas (*i.e. mortality caps*) include all known cougar mortalities across all ages

Harvest closes when cap met but removals for damage and conflict are still permitted, and all forms of mortality are still counted

Zone	Quota (Cap)	Total Mortality					
		2016	2017	2018	2019	2020	2021
A Coast/North Cascades	180	177	157	193	160	136	161
B SW Cascades	200	131	140	156	111	96	124
C SE Cascades	80	42	43	40	23	20	12
D Col. Basin	100	27	38	39	30	24	22
E Blue Mts.	270	114	142	117	125	102	86
F SE Oregon	140	55	51	45	42	46	31
Total	970	546	571	591	491	424	436

Cougar 2023 Season Proposals

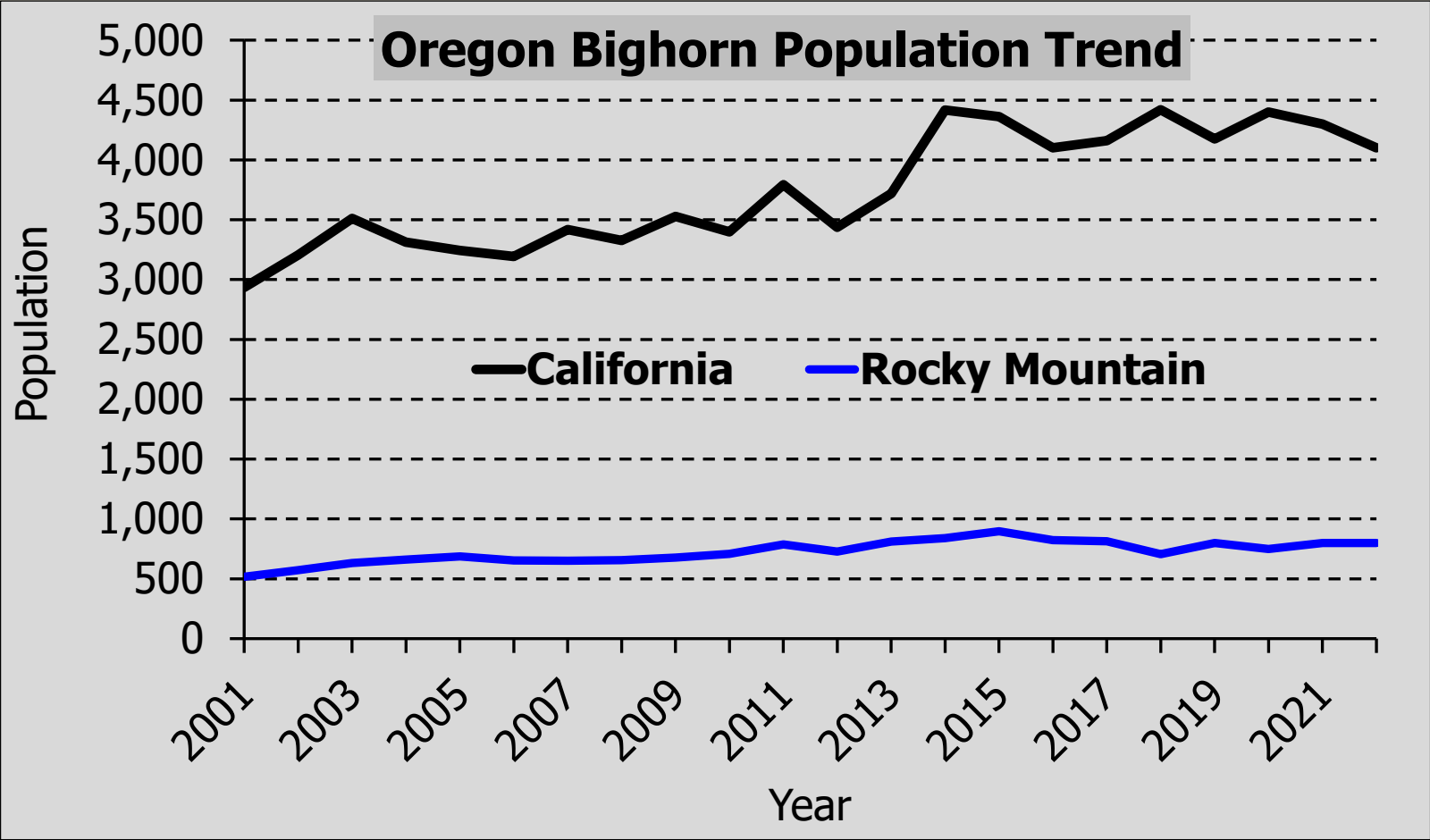


- Maintain year-round season
- Maintain season structure
 - Two cougar tag opportunity
 - Statewide additional cougar tag
- No changes to zone quotas
- Continue mandatory check-in
- Continue to protect kittens and females with kittens

Ungulates








Bighorn Sheep Population Monitoring



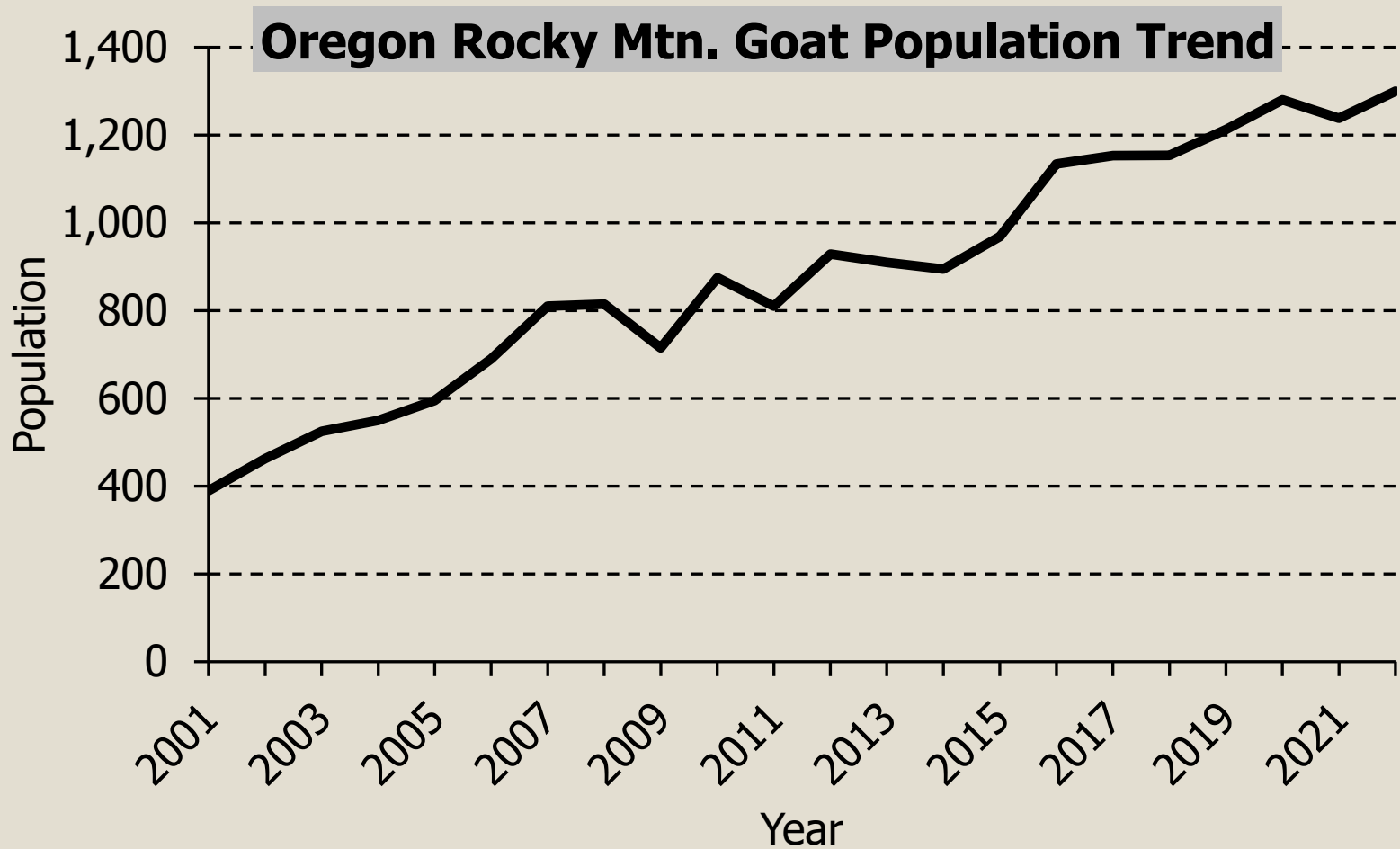
Bighorn Sheep Population Management

- 🐏 Completed research evaluating bighorn sheep health in SE Oregon
 - Ph.D. project with Oregon State University
- 🐏 Captures last winter
 - Disease sampling focus
 - 50 California bighorns in 3 herds
 - 127 Rocky Mtn bighorns in 2 herds
- 🐏 Captures planned winter 2022 – 2023
 - Continue disease testing in impacted herds
 - Hells Canyon Research and Monitoring
 - Expanding Risk of Contact evaluation with domestic sheep

2023 Bighorn Sheep Tag & Season Proposals

-  Delete one Rocky Mtn ram hunt
-  Five Rocky Mtn ram tags
-  72 California ram tags
-  22 California ewe tags
-  Five ram, two ewe nonresident tags (7%)

Rocky Mtn. Goat Population Monitoring

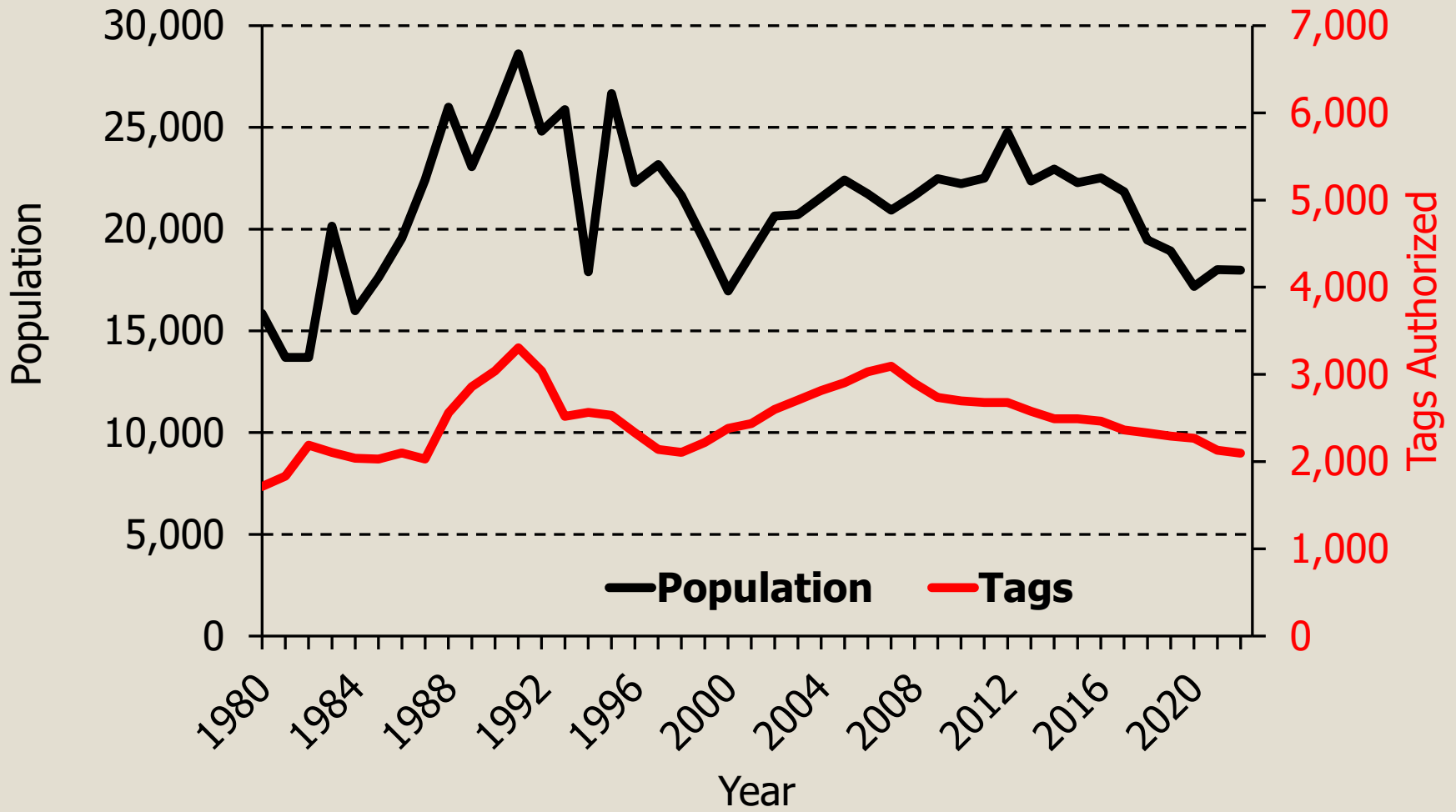


2023 Rocky Mtn. Goat Tag & Season Proposals

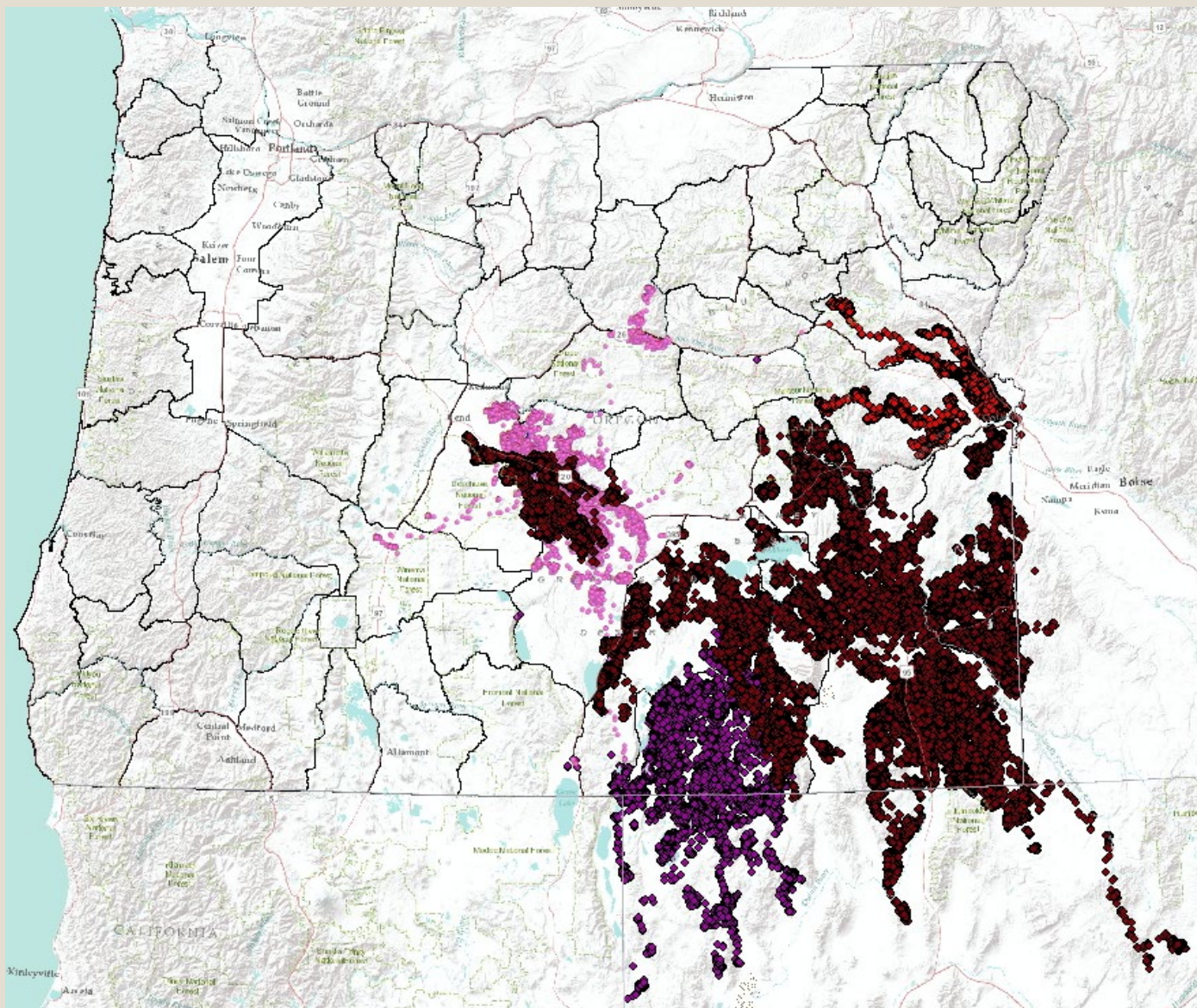
- No season changes
- 30 tags proposed
- Two nonresident tags (7%)



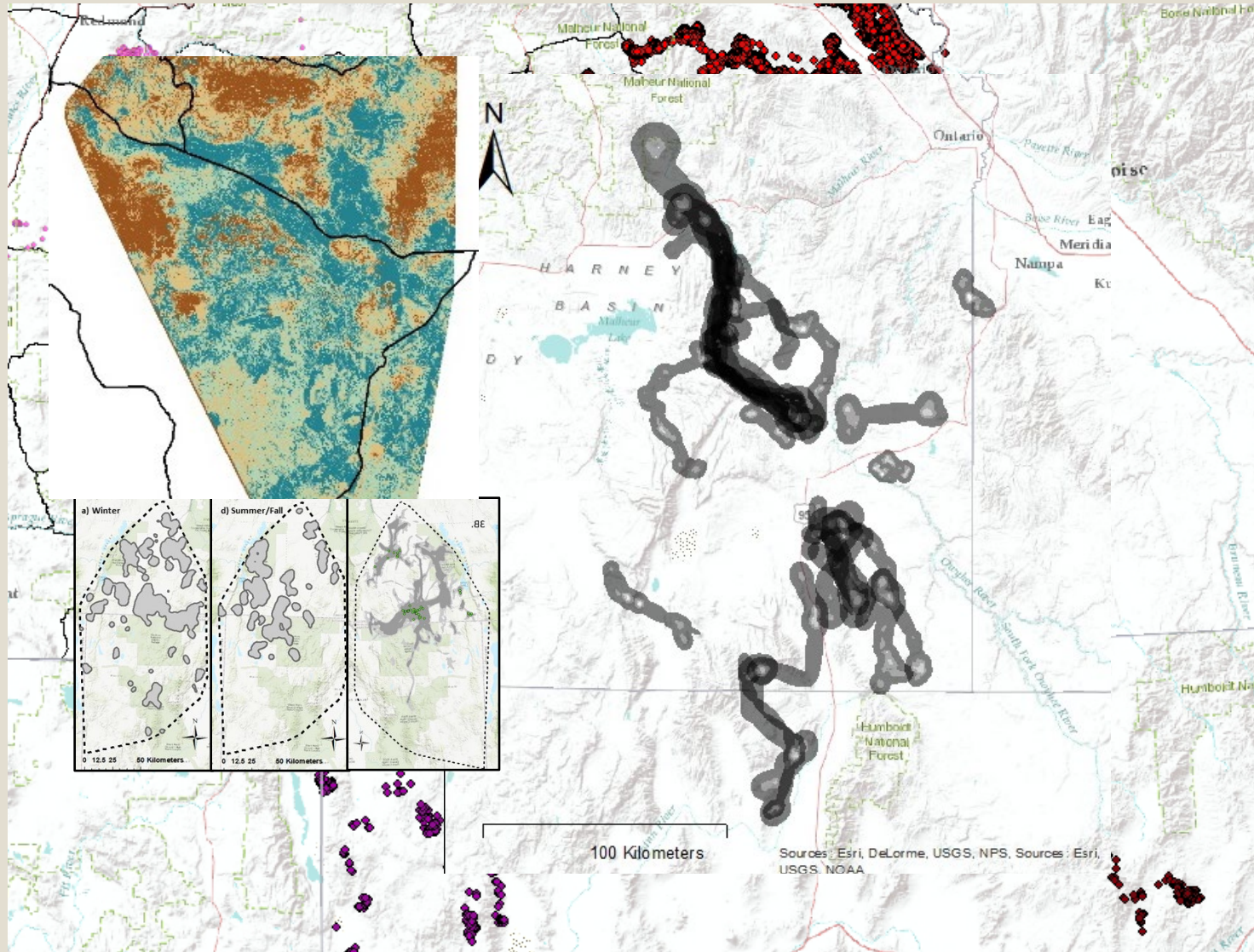
Pronghorn Population & Hunting



Pronghorn Research & Monitoring



Pronghorn Research & Monitoring

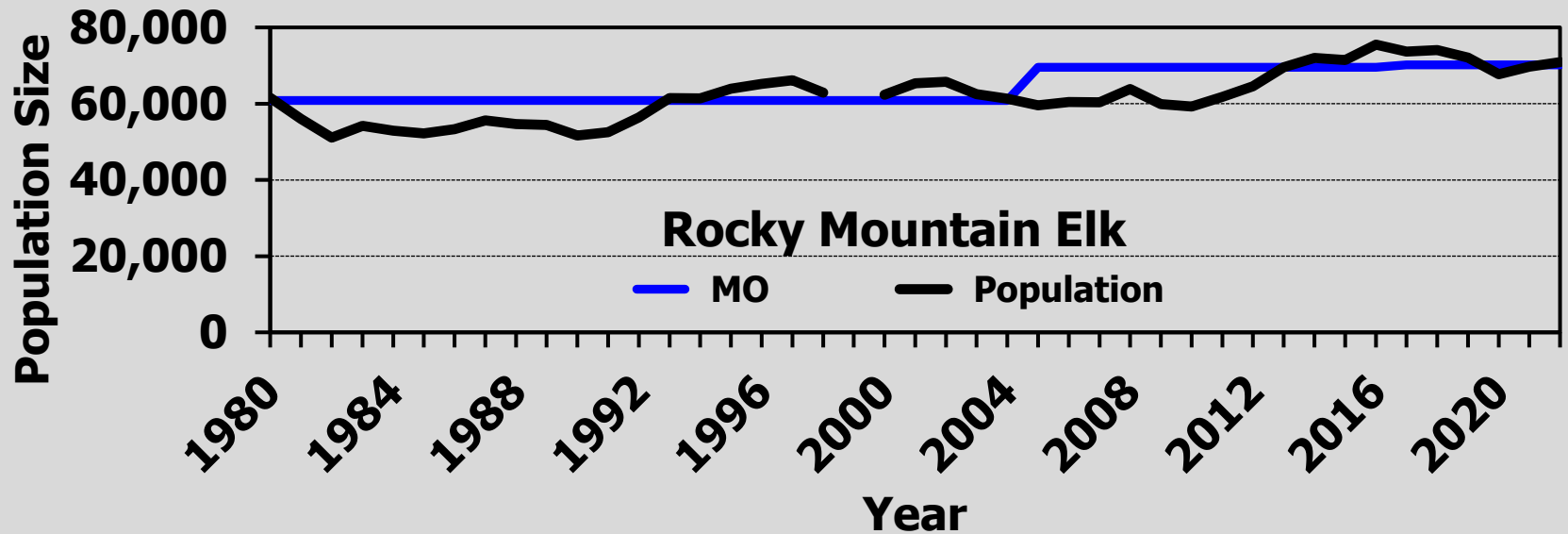
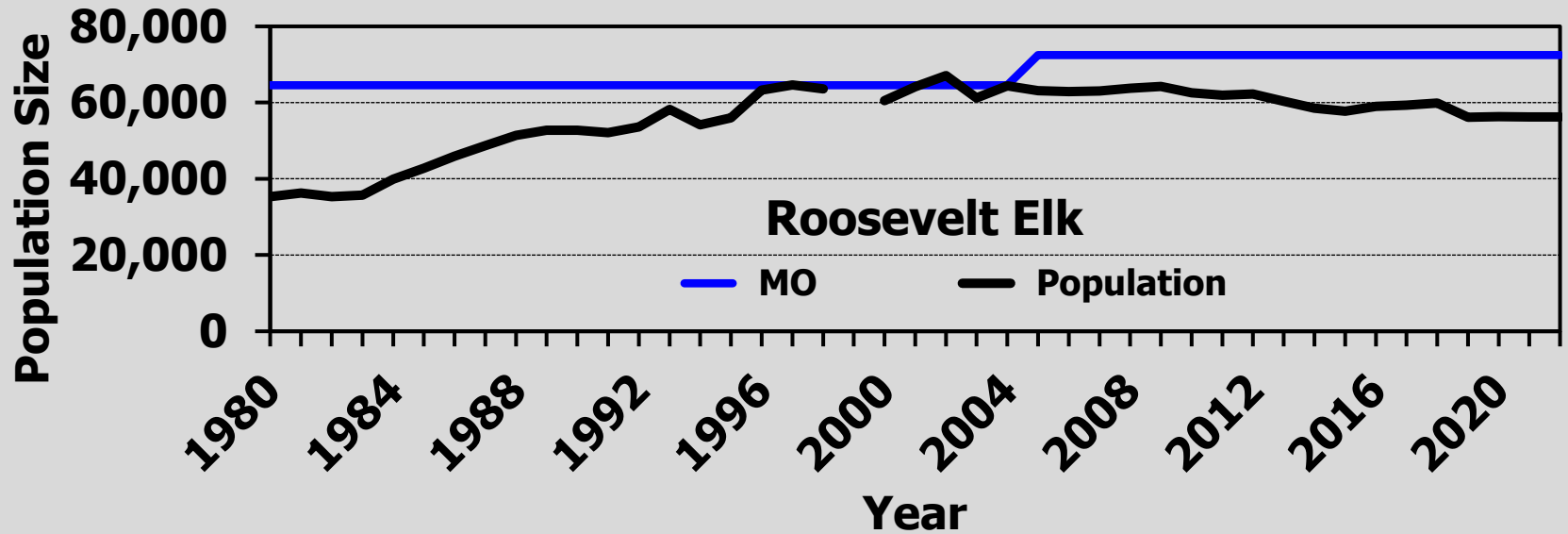


Controlled Pronghorn Tag Proposals

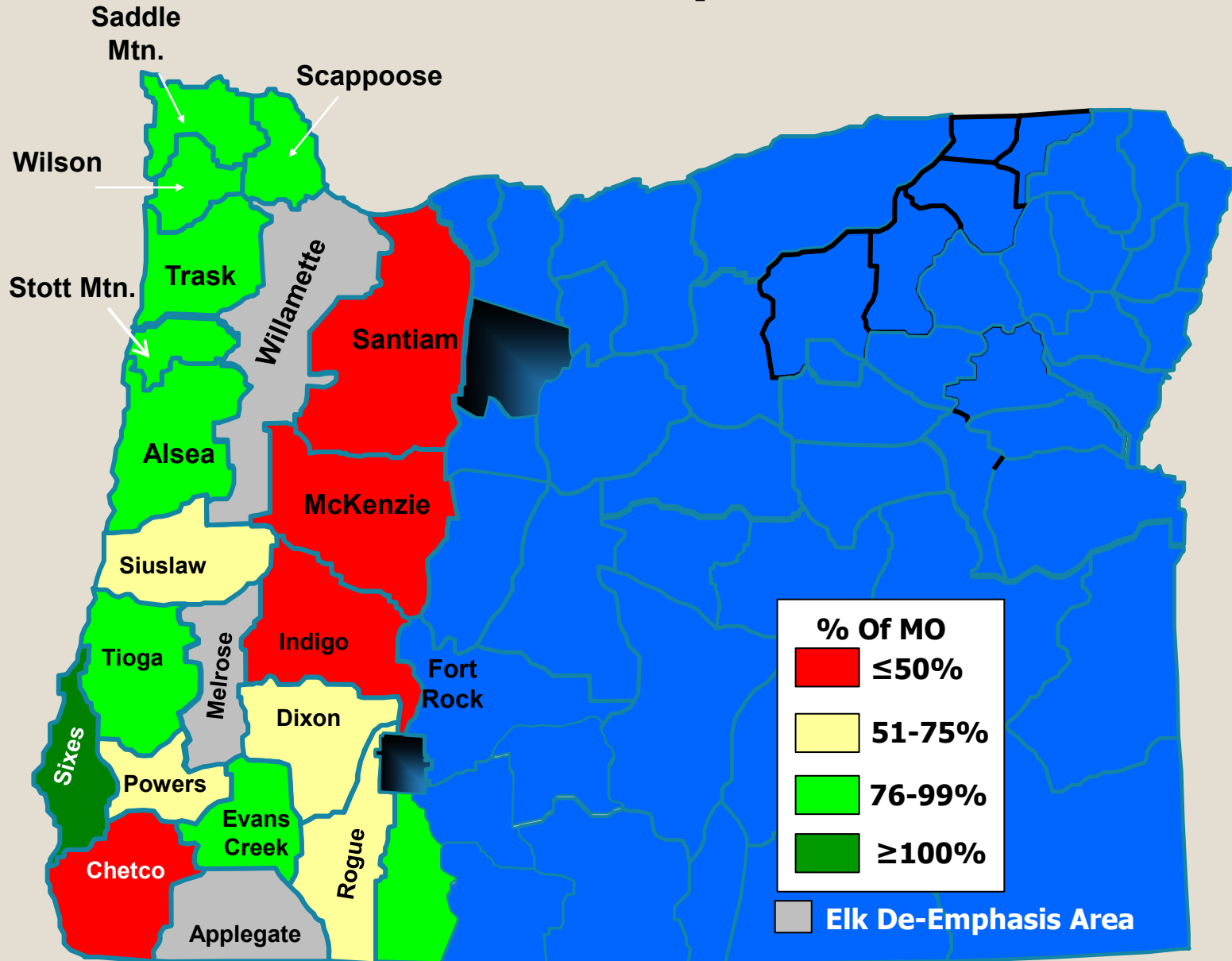
No season changes for 2023

Hunt Type	2022 Tags	2023 Tags	% Change
Any Legal Weapon	1,400	1,406	<1%
Muzzleloader	127	138	9%
Bow	451	436	-3%
Youth	35	37	1%
Premium	27	26	<1%
Total Pronghorn	2,040	2,043	<1%

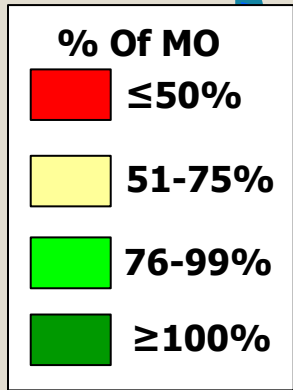
Elk Population Status



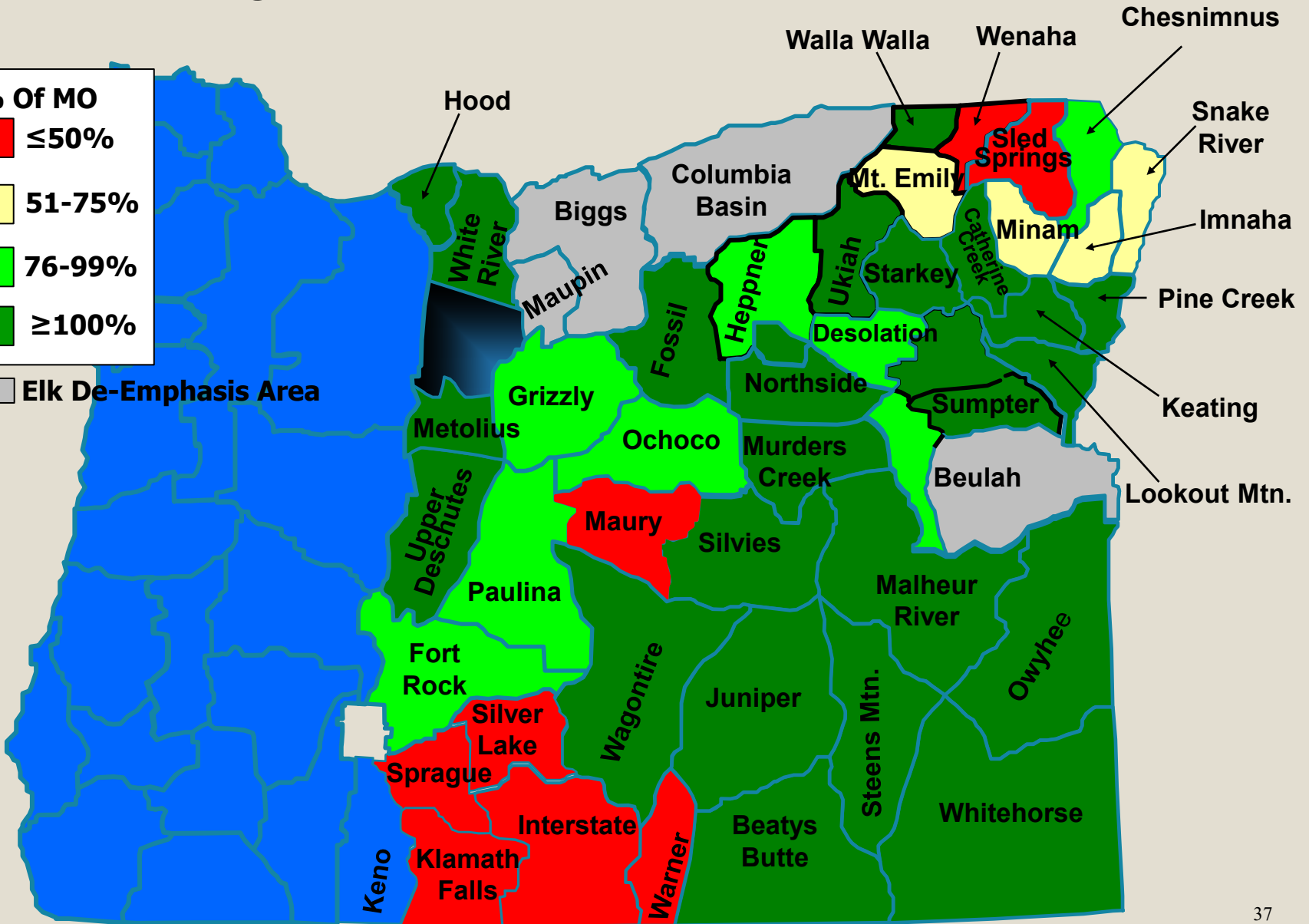
Roosevelt Elk Population MOs



Rocky Mtn. Elk Population MOs



Elk De-Emphasis Area



Elk Population Monitoring & Research

Western Oregon Elk Survival and Herd Range Delineation

- Herd Movements
- Survival
- Seasonal Ranges
- Calf Production
- Resource Selection
- Nutrition

Spatial Capture Recapture to Estimate Roosevelt Elk Density

- Non-invasive population estimation

Starkey Experimental Forest Research

- Breeding Bull Study
- Habitat-Nutrition Models
- Predation-Nutrition
- Security Cover
- Competition

Rocky Mountain Elk Herd Movements and Survival Monitoring

- Herd Movements
- Seasonal Ranges
- Survival

General Elk Season Proposals



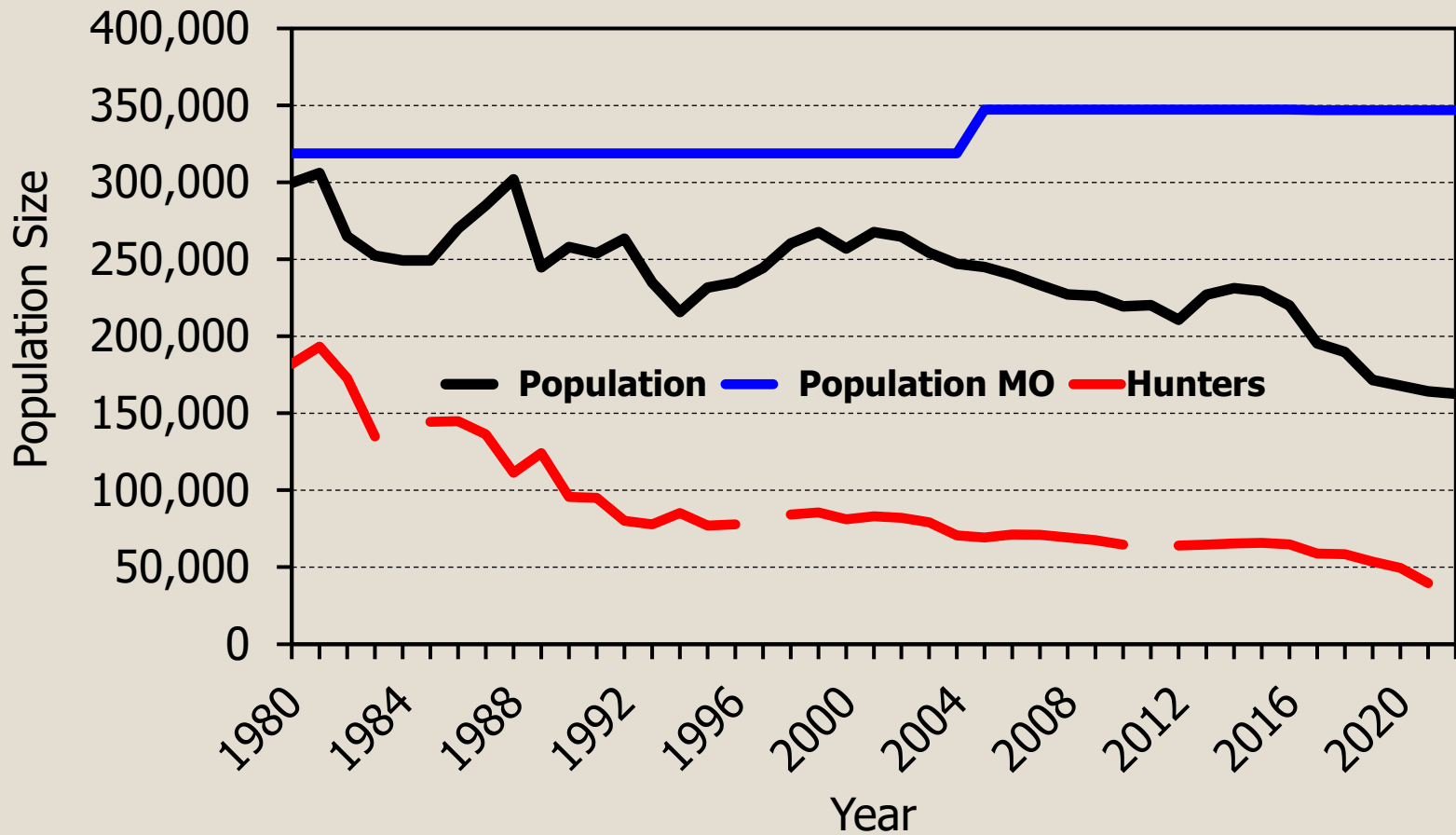
Season	Bag Limit	2023 Season
Coast 1 st Season	One Bull	Nov. 18 – 21
Coast 2 nd Season	One Bull One Spike Bull (Units 12, 14, 20)	Nov. 25 – Dec. 1
West Cascade	One Bull	Nov. 11 – Nov. 17
Rocky Mtn. 2 nd Season	One Spike Bull	Nov. 11 – 19
General Season Elk Damage Tag	Antlerless Elk	W Oregon & De-emphasis Areas, Aug. 1 – Mar. 31; E Oregon Outside De-emphasis Areas Aug. 1 – Nov. 30
General Bow	Legal Bull	Sept. 2 – Oct. 1

Controlled Elk Season Proposals

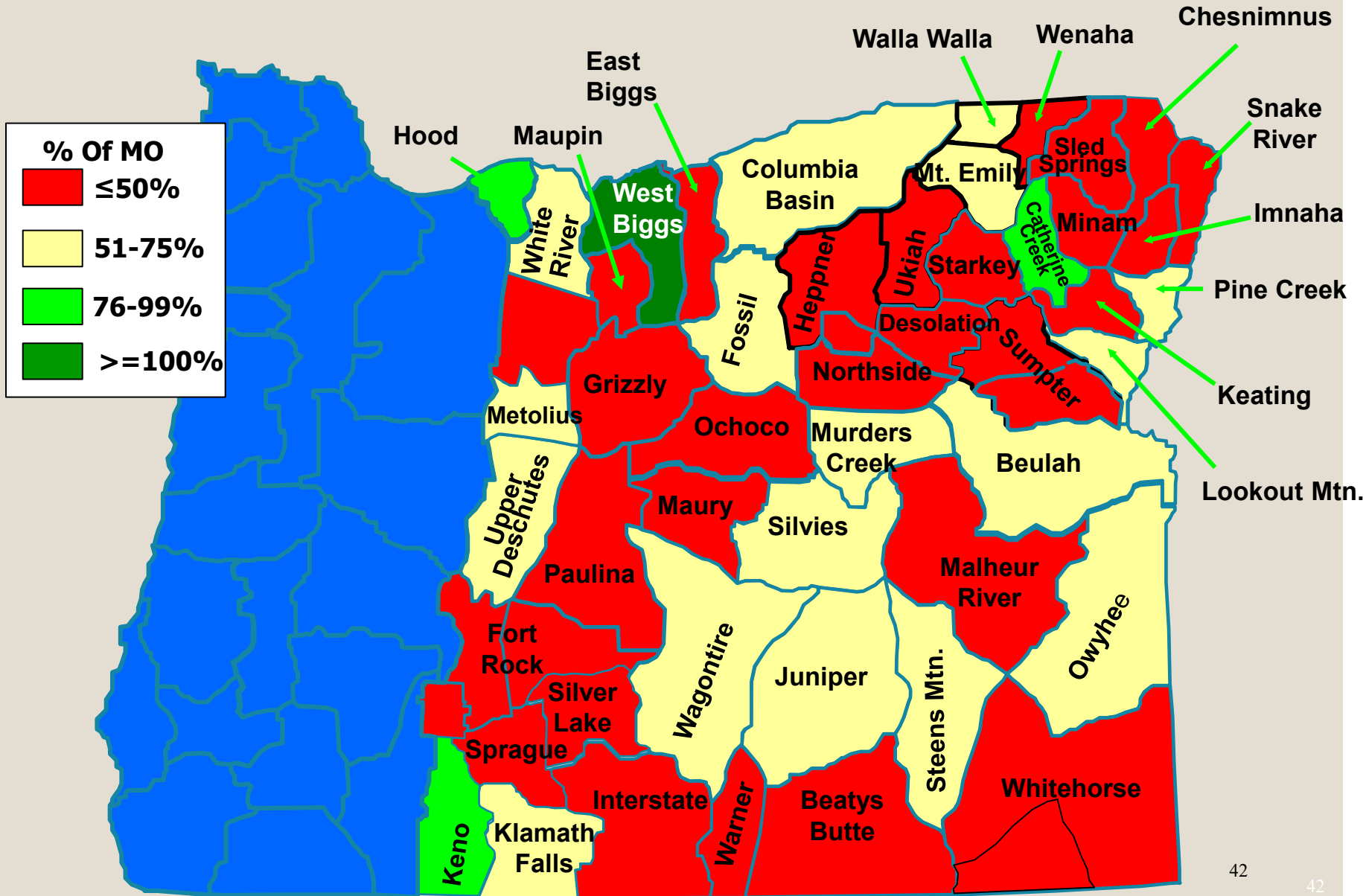


- New statewide youth bow hunt
(except Walla Walla, Wenaha, Mt. Emily,
Sled Springs, Chesnimnus)
- Delete two antlerless hunts
- Two new cow hunts
(Starkey ALW, Catherine Cr. Muzzleloader)
- New late ALW any elk hunt in Lookout Mtn.
- Shift Cascade muzzleloader one week later

Mule Deer Population and Hunters

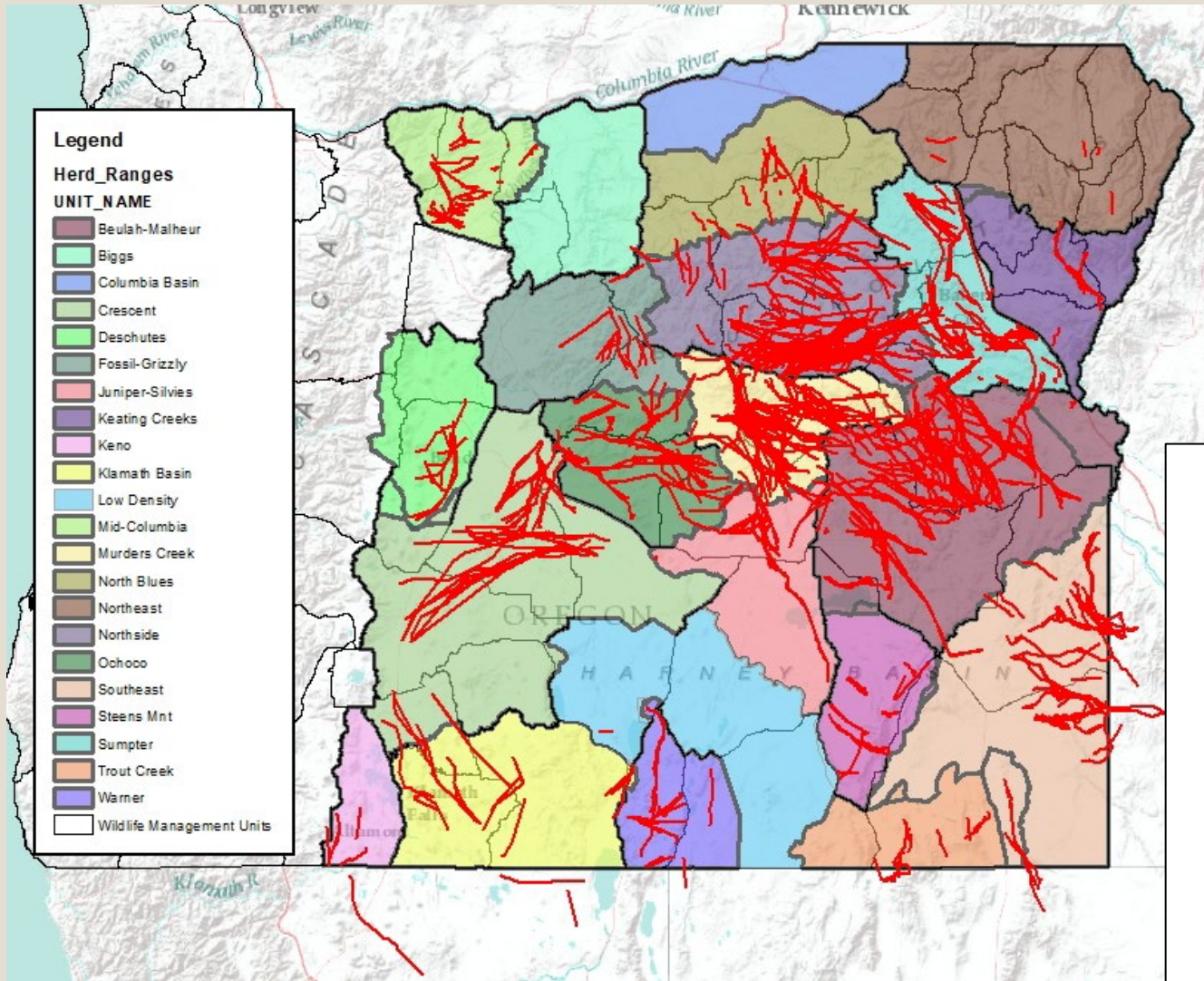


Mule Deer Population Status



Mule Deer Herd Range Analysis

Mule Deer Plan Revision

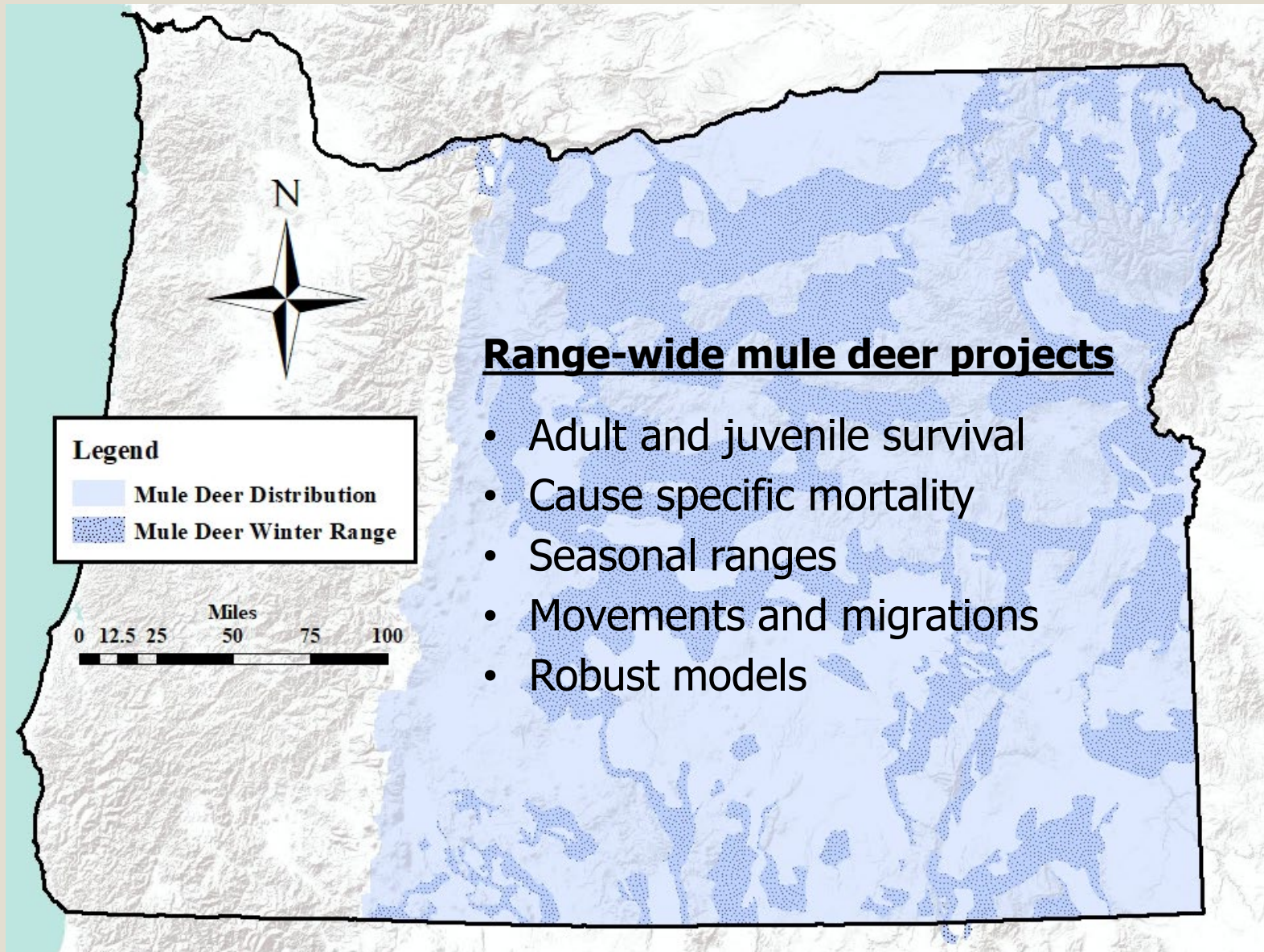


OREGON'S
MULE DEER MANAGEMENT PLAN
February 2003



Oregon Department of Fish and Wildlife
P.O. Box 59
2501 S.W. First Avenue
Portland, Oregon 97201

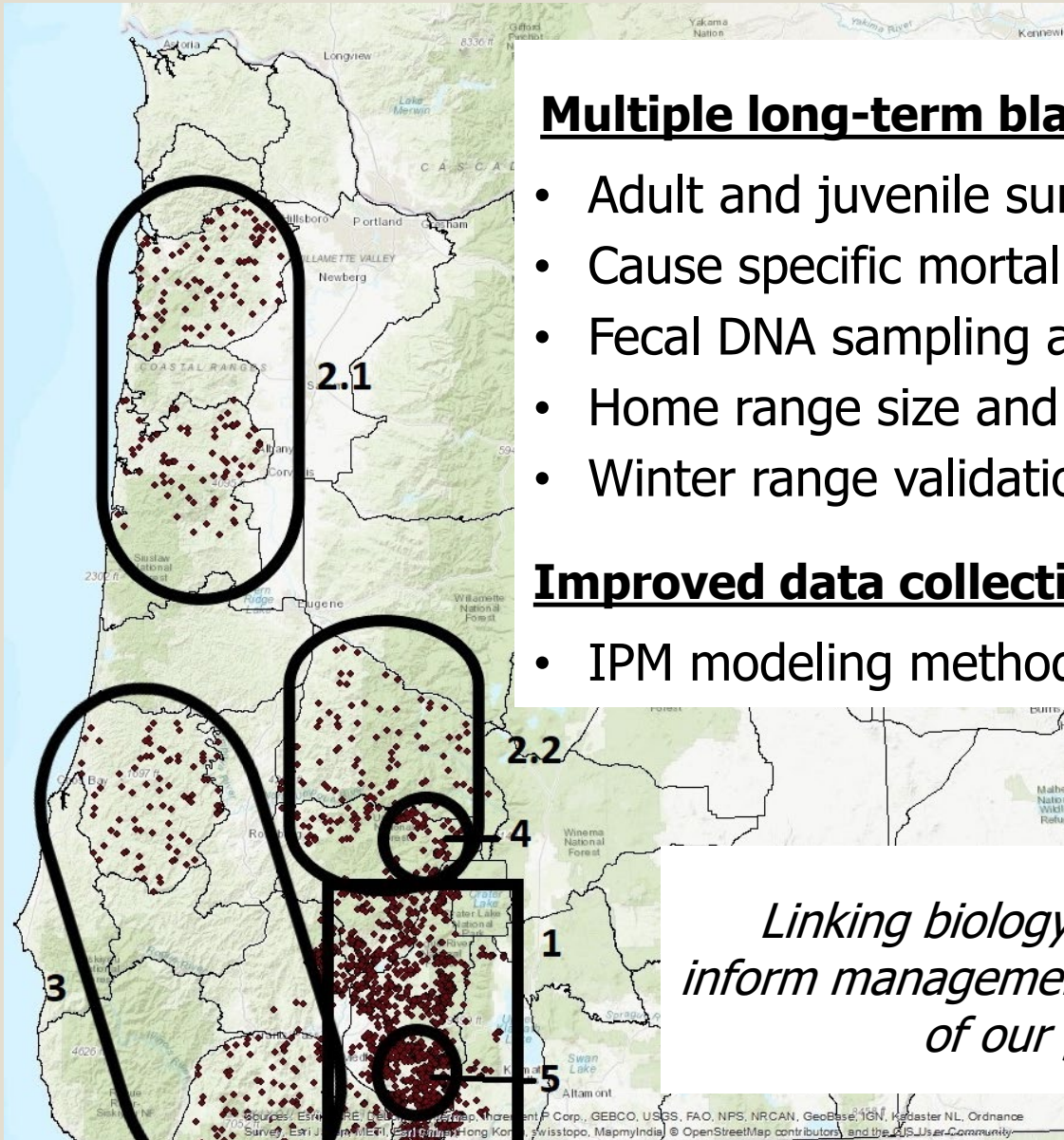
Mule Deer Population Monitoring



Range-wide mule deer projects

- Adult and juvenile survival
- Cause specific mortality
- Seasonal ranges
- Movements and migrations
- Robust models

Black-tailed Deer Population Monitoring



Multiple long-term black-tailed deer projects

- Adult and juvenile survival
- Cause specific mortality
- Fecal DNA sampling and density estimation
- Home range size and habitat use
- Winter range validation for land use

Improved data collection


- IPM modeling methods

Linking biology and management to inform management decision-making for all of our game species

General Deer Season Proposals



Season	Bag Limit	2023 Season
Western General Deer	Buck w/ Visible Antler	Oct. 7 – Nov. 10
Western General Bow	Buck w/ Visible Antler	Sept. 2 – Oct. 1
NW Late Deer Bow	Buck w/ Visible Antler	Nov. 25 – Dec. 17
SW Late Deer Bow	Buck w/ Visible Antler	Nov. 18 – Dec. 10

 Add Powers WMU to SW Late Season Areas
(Traditional archery equipment only;
One black-tailed buck deer)

Controlled Deer Season & Tag Proposals

- 🦌 Six-day calendar shift for 2023
- 🦌 Delete Starkey Experimental Forest (152B)
- 🦌 New early SW Oregon bow hunt, Mt. Emily youth hunt
- 🦌 Two new late ALW hunts in western Oregon
- 🦌 No hunt changes for 600 series Antlerless Deer

Questions?

